

Installation and Configuration of TechnoTrend DVB-S Budget Cards for Microsoft Windows XP MediaCenter Edition.

1. Driver Installation / Update	1
1.1. First Time Driver Installation	1
1.2. Driver Update	1
2. DvbTMapper Configuration	1
3. CamControl	7
4. Additional Requirements and Information	9

1. Driver Installation / Update

The minimum driver version you need is 4.4.10.5 for the tuner and the capture driver.

1.1. First Time Driver Installation

Power off your system.

Disconnect all power cables.

Insert your DVB-S Budget card into a free PCI slot.

Reconnect the power cable.

Boot your Windows XP MCE system.

The Hardware Wizard should automatically start after login.

Point the Hardware Wizard in the following dialogs to the driver which is contained in this packet.

1.2. Driver Update

Open the Device Manager and do a right click on your DVB-S Budget card

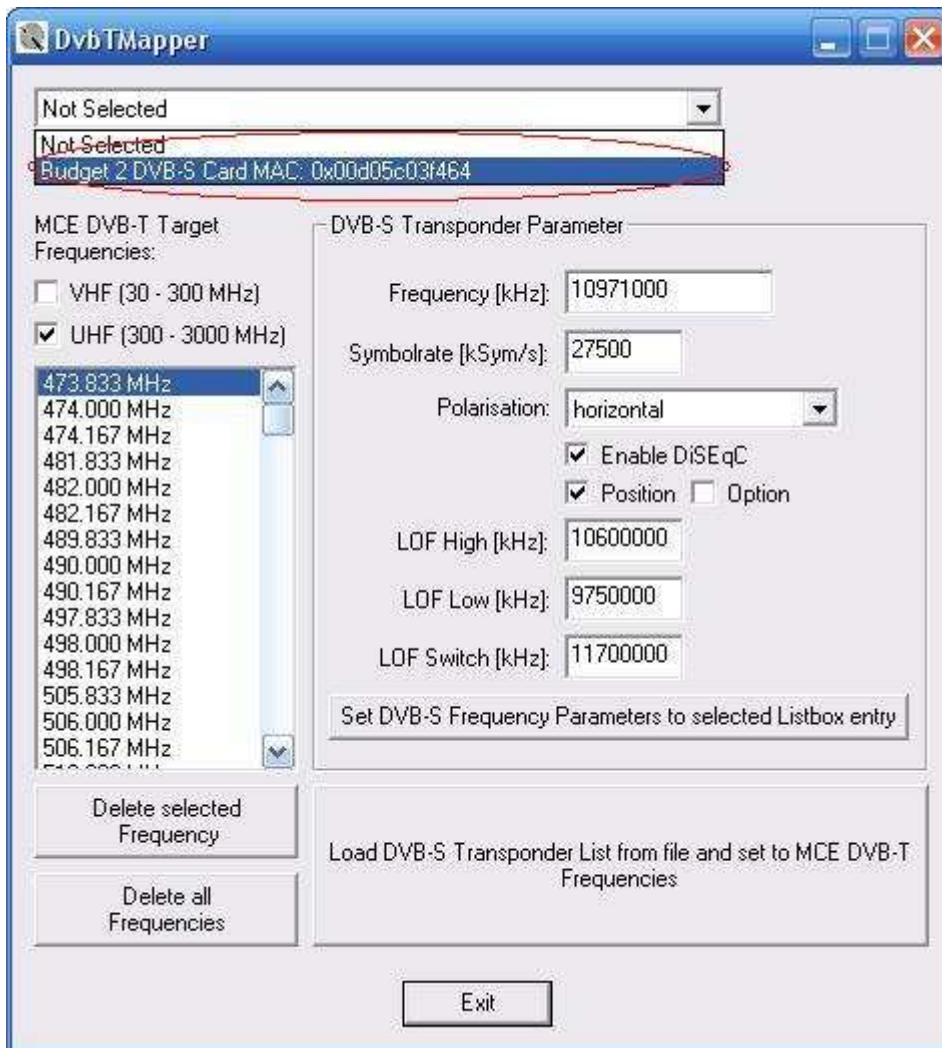


Point the Hardware Wizard in the following dialogs to the driver which is contained in this packet.

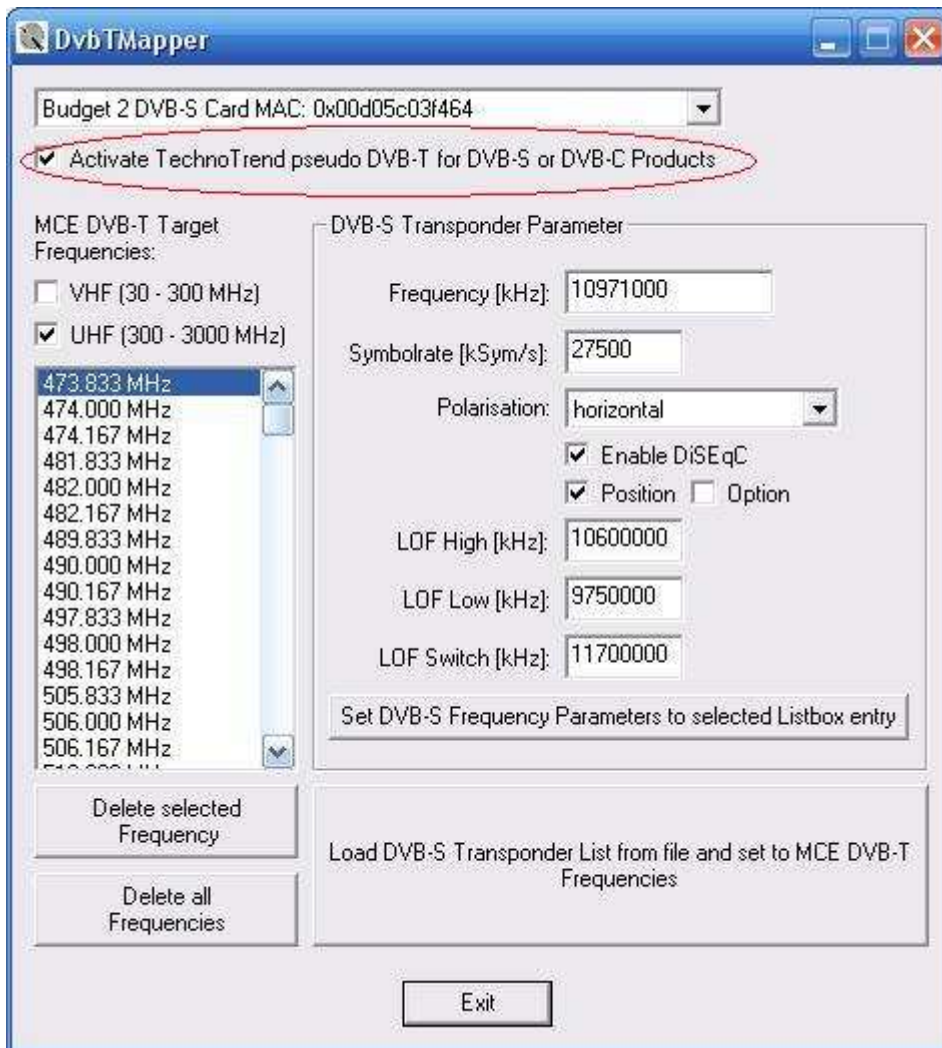
2. DvbTMapper Configuration

2.1. Start the DvbTMapper.exe from this package.

2.2. Select the device you want to configure in the list box on top of the tool.



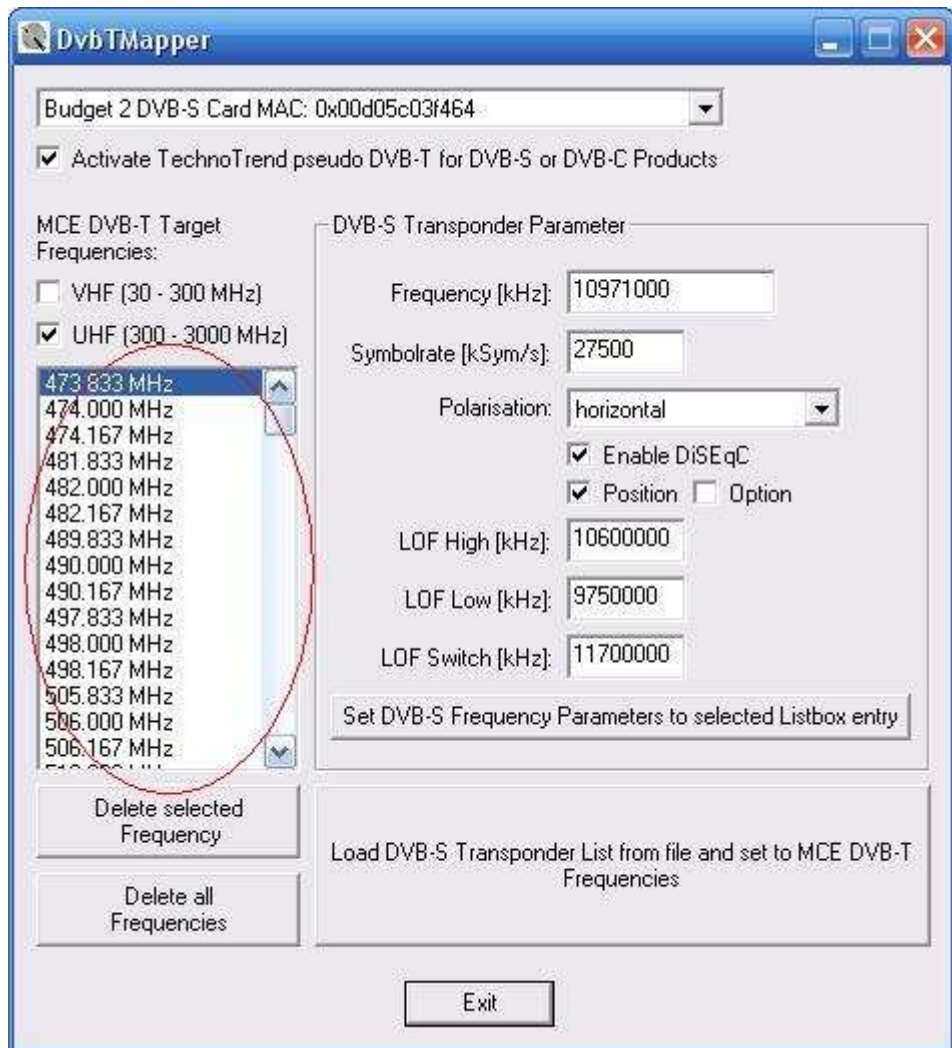
- If you can't see a device in the list box then you have not installed a BDA driver for your DVB-S Budget card or your BDA driver has a version number below 4.4.10.8.
- 2.3. Activate the pseudo DVB-T by selecting the appropriate checkbox



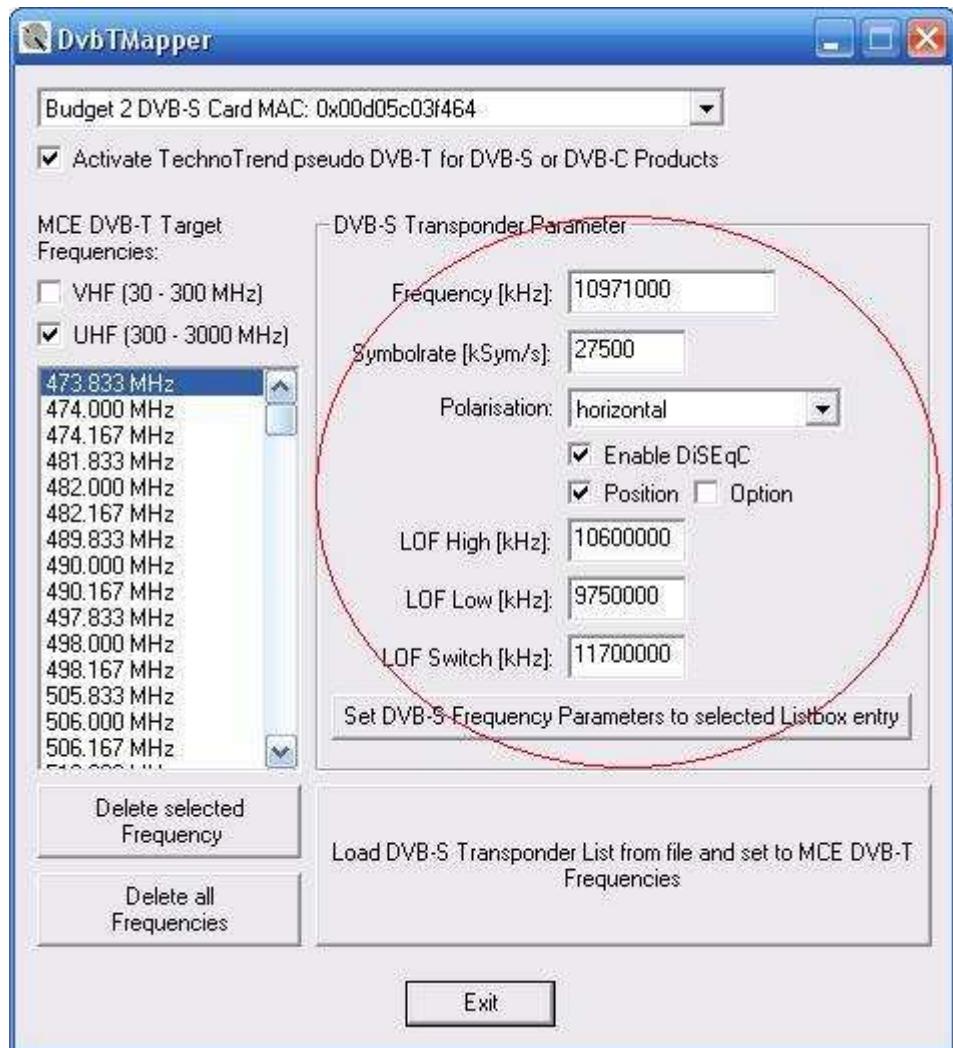
2.4. Map DVB-S Transponder to DVB-T Transponder

2.4.1. Mapping manual

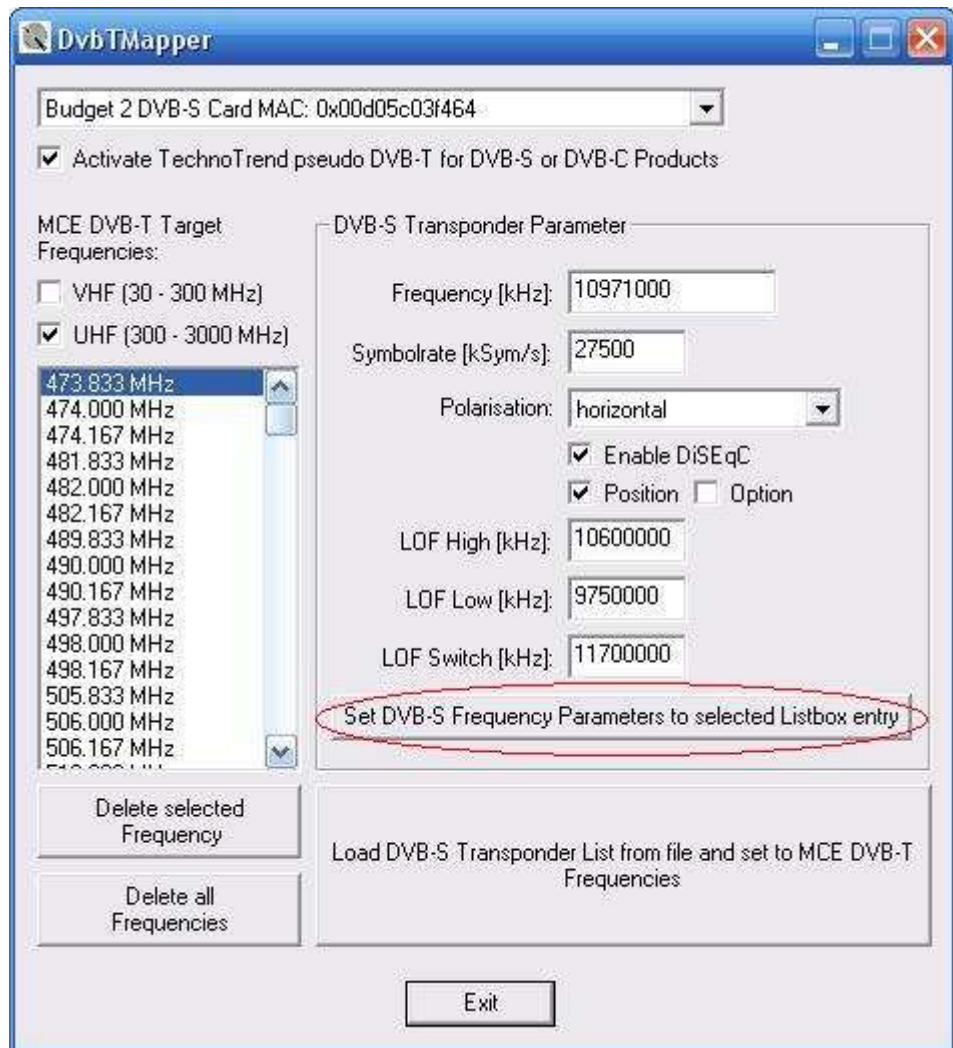
2.4.1.1. Select a target frequency in the list box on the left side.



2.4.1.2. Enter DVB-S transponder parameters into the edit fields

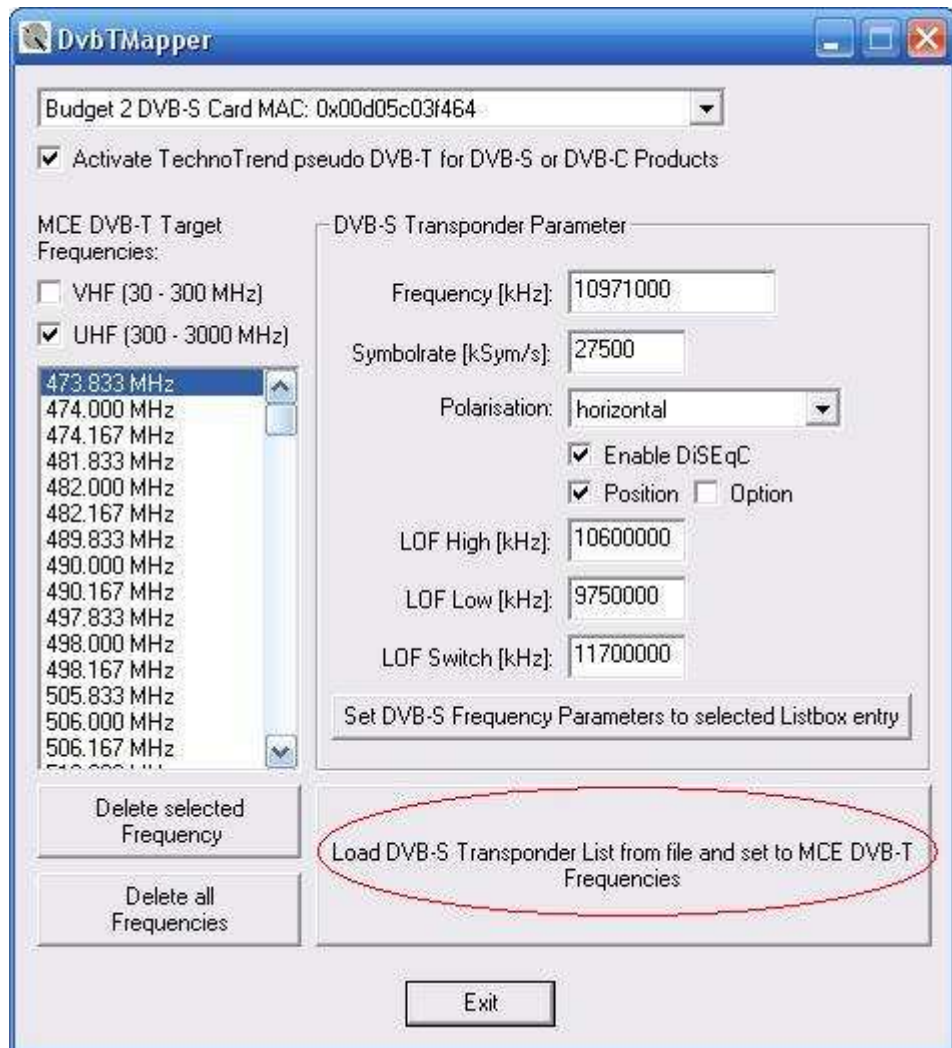


2.4.1.3. Save your values by clicking on the “Set DVB-S ...”-button



2.4.2. Mapping by file

2.4.2.1. Load a DVB-S transponder file by clicking on the "Load DVB-S ..." Button.



2.4.2.2. Control the settings by selecting a frequency in the list box on the left side

2.5. Exit DvbTMapper.exe

2.6. Reboot your system so that the configurations can take effect.

2.7. Start MCE and do a channel search.

3. CamControl

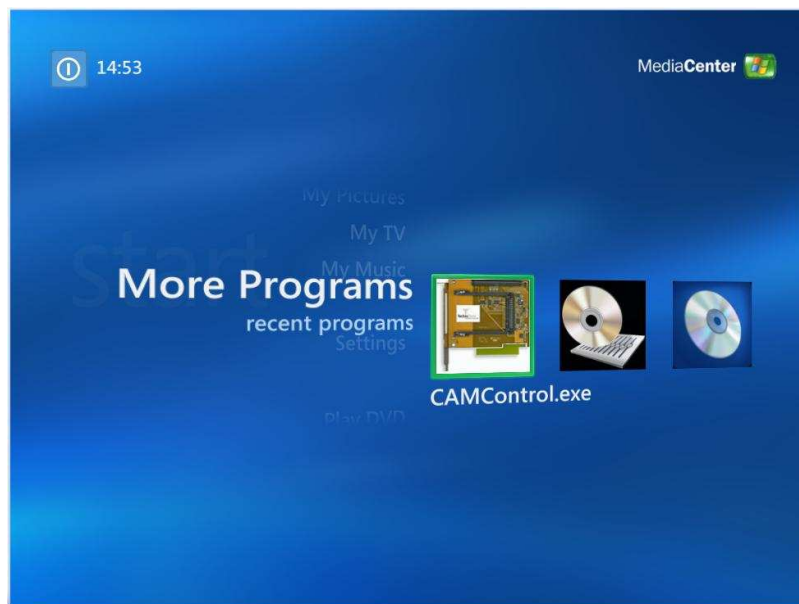
CamControl is a MCE-Extension to control Common Interfaces for TechnoTrend Budgetcards.

The application contains two plug-in for MCE and a dialog based application.



The BackgroundAddin controls CAM initializing while MCE starts.

With the OnDemandAddin the CamControl-dialog can be started from „More Programs“-menu within MCE.



CamControl-dialog can be controlled with mouse or a MCE remote control.



With Up /Down dialog elements can be focused. With Left /Right selected elements of the TV- or. Radio-List boxes can be changed.

After selecting a service the Decrypt-button activates encryption

Important: For the BackgroundAddin Microsoft's „MCE Rollup 2“ is needed.

4. Additional Requirements and Information

To watch DVB with Microsoft Windows XP MCE a Decoder must be installed.

If you have more than one TechnoTrend DVB-S budget card you can use the driver delivered with this package for all this cards. The only thing is to configure the appropriate card with DvbTMapper.exe.

A reboot of your system is only needed if you change the state of „pseudo DVB-T“ (see 2.3). For a later change of the transponder lists no reboot is needed.

This package contains two transponder files (simple Text files). One is for satellite equipment without the need of doing DiSEqC (e.g. a Single-LNB) and the other one is ready for DiSEqC (Position A and Option A). Feel free to edit these files for your requirements.